

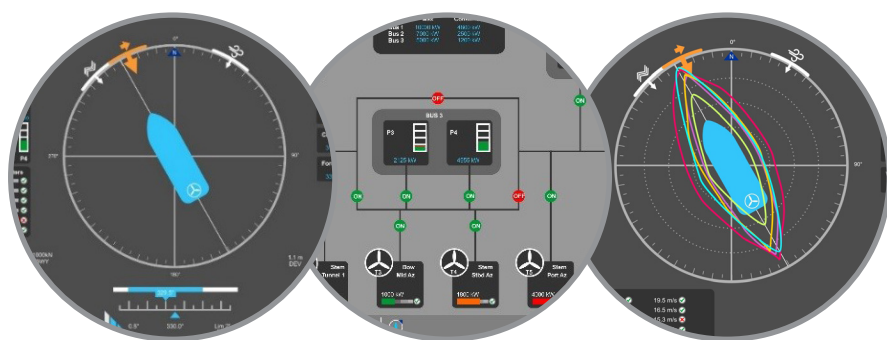
**aselsan**



# DIKONS™

AUTOMATIC CONTROL SYSTEM





# DIKONS™

## AUTOMATIC CONTROL SYSTEM

**ASELSAN DIKONS™ FAMILY** is designed for increasing the maneuvering capability and performing the dynamic positioning of the monohull or catamaran platforms by controlling the maneuver and propulsion systems in spite of the environmental conditions such as wind, wave and current. DikONS™ family consists of Automatic Control System, Semi Automatic Control System and Manual Control System.

**DIKONS™ Automatic Control System** has the below functional modes.

- Position Control Mode
- Auto Pilot Mode
- Target Track Mode
- Route Track Mode
- Joystick Mode

**DIKONS™ Automatic Control System** is a ship-specific system with high reliability, integrated with navigation systems such as gyro, anemometer, MRU, DGPS and thrusters, power systems and rudder systems.

### DIKONS™ Automatic Control System Features

- Active Redundancy Concept
- Minimum Power Consumption of the Propulsion System
- Black-Out Prevention for Platform Power System
- Ship Motion Simulation
- Built In Test (BIT) Capability
- Embedded Training for the User
- Dynamic Positioning Capability Plot

### Specifications

- Compatible with IMO 645 and Turkish Loyd Standards
- Compatible with MIL-STD-810G
- Modular Design
- Removable and Replacement Capability of PCBs

