

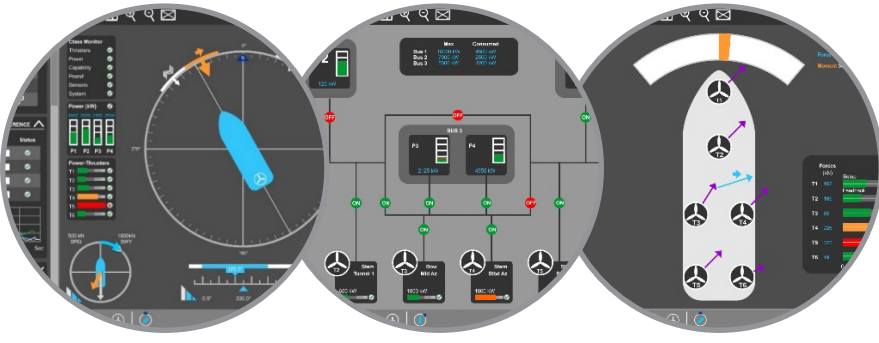
aselsan



DIKONS™

MANUAL CONTROL SYSTEM





DIKONS™

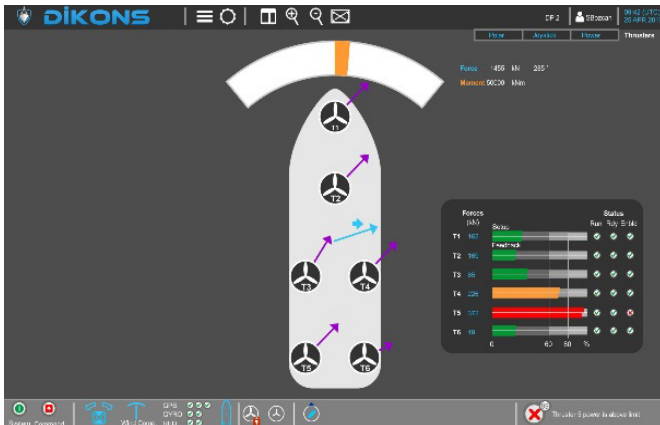
MANUAL CONTROL SYSTEM

ASELSAN DIKONS™ FAMILY is designed for increasing the maneuvering capability and performing the dynamic positioning of the monohull or catamaran platforms by controlling the maneuver and propulsion systems in spite of the environmental conditions such as wind, wave and current. DIKONS™ family consists of Automatic Control System, Semi Automatic Control System and Manual Control System.

DIKONS™ Manual Control System has the below functional modes.

- Thruster System Control Mode

DIKONS™ Manual Control System is a ship-specific system with high reliability, integrated with thrusters.



DIKONS™ Manual Control System Features

- Active Redundancy Concept
- Built In Test (BIT) Capability
- Separate Use of Propulsion Systems

Specifications

- Compatible with IMO 645 and Turkish Loyd Standards
- Compatible with MIL-STD-810G
- Modular Design
- Removable and Replacement Capability of PCBs