

KUZGUN

ELECTRO-OPTICAL RECONNAISSANCE,
SURVEILLANCE AND TARGETING SYSTEM

HIGH PERFORMANCE IR CAMERA

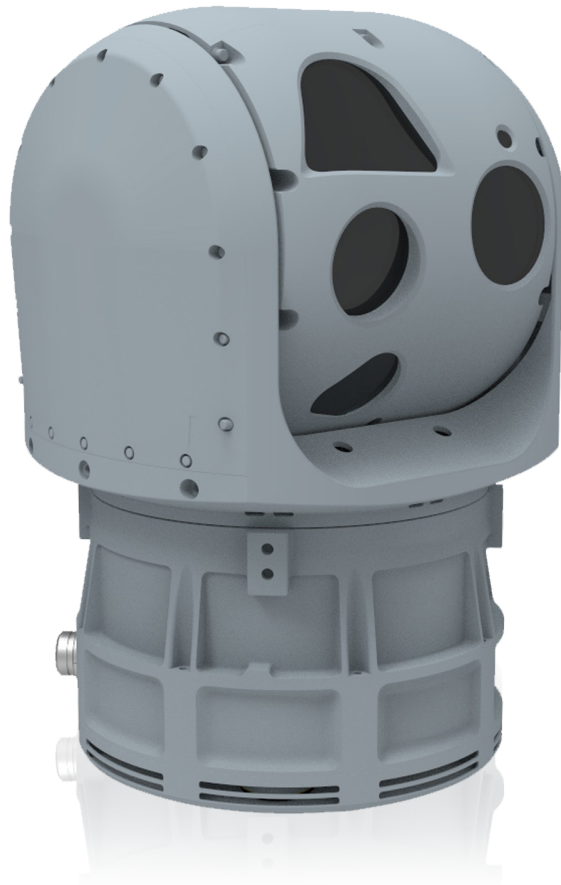
FULL HD DAY TV CAMERA

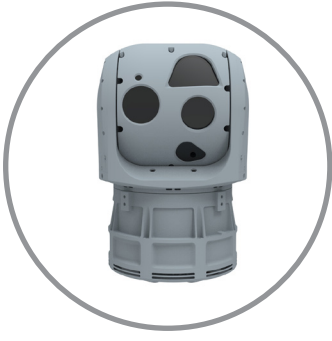
LASER DESIGNATOR

EYE-SAFE LASER RANGE FINDER

LASER POINTER

SINGLE LRU





KUZGUN

ELECTRO-OPTICAL RECONNAISSANCE, SURVEILLANCE AND TARGETING SYSTEM

Applications

- Targeting Systems
- Manned / Unmanned Air Vehicles
- Border / Coast Security
- Long Range Detection, Recognition & Identification

Main Features

- 10" Gimbal Size
- High Performance Cooled IR Camera
- Full HD Color Day TV Camera
- Laser Target Designator
- Eye-Safe Laser Range Finder
- NIR Laser Pointer
- Inertial Measurement Unit (IMU)
- Compact and Light Design
- Single LRU
- Gyroscopic Stabilization
- GPS Data Input
- Advanced Image Processing
- Automatic Target Tracking
- Accurate Target Geo-Location

Environmental Conditions

- Operating Temperature : -32°C to +50°C
- Storage Temperature : -40°C to +70°C
- Environmental Spec : MIL-STD-810G

Technical Specifications

IR Camera

- Sensor : 640 x 512 MWIR (3-5 μ m)
- Optical Zoom : 12X Continuous
- Digital Zoom : 4X
- WFOV : 25° Azimuth
- MFOV : 6.0° Azimuth
- NFOV : 2.0° Azimuth

Day TV Camera

- Sensor Type : Visible CMOS
- Sensor Resolution : 1920 x 1080
- Optical Zoom : 30X
- Digital Zoom : 12X
- WFOV : 60° Azimuth
- MFOV : 6.0° Azimuth
- NFOV : 2.3° Azimuth

Laser Target Designator

- Wavelength : 1064 nm
- Pulse Energy : > 70mj
- Coding : STANAG 3733 PRF Band I & II

Laser Range Finder

- Wavelength : 1535 nm
- Measurement Range : 100 m - 15km
- Accuracy : \pm 3m
- Repetition Rate : 1Hz Continuous
- Safety Class : Class 1, ANSI-Z136.1-2014

Laser Pointer

- Wavelength : NIR

Gimbal Specifications

- Azimuth Travel Range : 360° Continuous
- Elevation Travel Range : -110°/+90°

General

- Video Output : 2 x SDI (SMPTE-292M) & 1 x Gige & 2 x PAL or NTSC
- Control Interface : 3 x RS422, Gigabit Ethernet
- Power Interface : 28 VDC (MIL-STD-704F)
- Weight : 22 kg
- Dimensions : 10 inch Diameter, 42 cm Height

