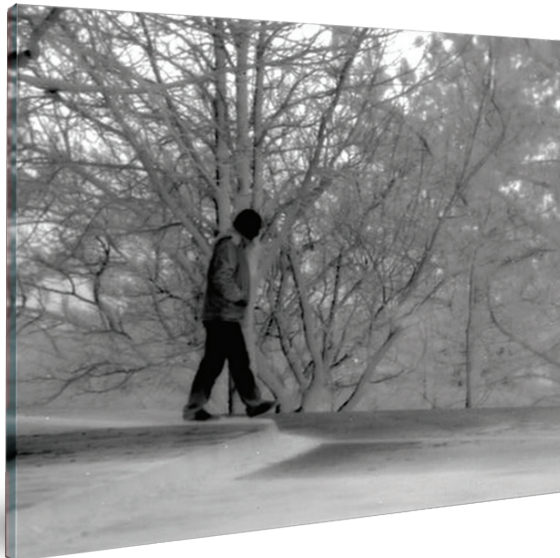
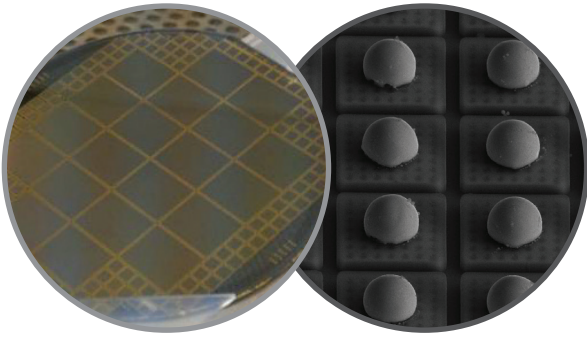


QWIP 640





QWIP 640

FPA Specifications

QWIP 640 IDDCA can be adapted to high resolution thermal imaging for all military and civilian applications

Array type

640x512 AlGaAs/GaAs QWIP

Pixel pitch

20 μm or 25 μm

Spectral response

$\lambda_c \geq 9 \mu\text{m}$, $\Delta\lambda \geq 1 \mu\text{m}$

FPA operating temperature

65 K – 68 K typical

Operation modes

Snapshot

Charge capacity

11 Me⁻

Number of outputs

1, 2 or 4

Max. frame rate

100 Hz (4 output)

NETD

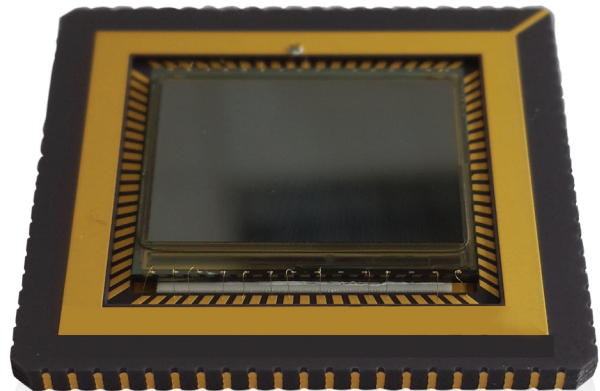
$\leq 30 \text{ mK}$ (f/2, T=67 K)

Operability

>99.5%

Cooler Type

Will be determined upon customer requirements



Developed by Quantum Devices & Nanophotonics Research Group, Middle East Technical University.

P: +90 (312) 592 10 00 | F: +90 (312) 354 13 02 | mgeomarketing@aselsan.com.tr



ASELSAN A.Ş. is a Turkish Armed Forces Foundation company.

aselsan